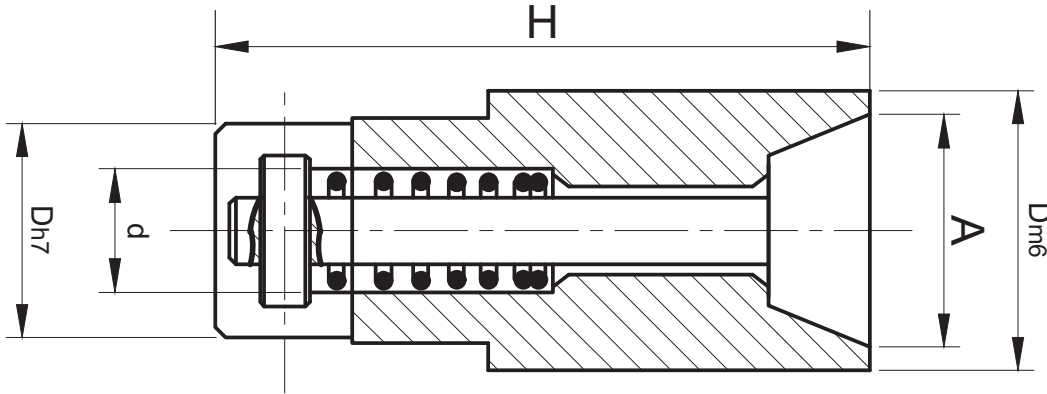


► Air Ejector (PPEA-B)

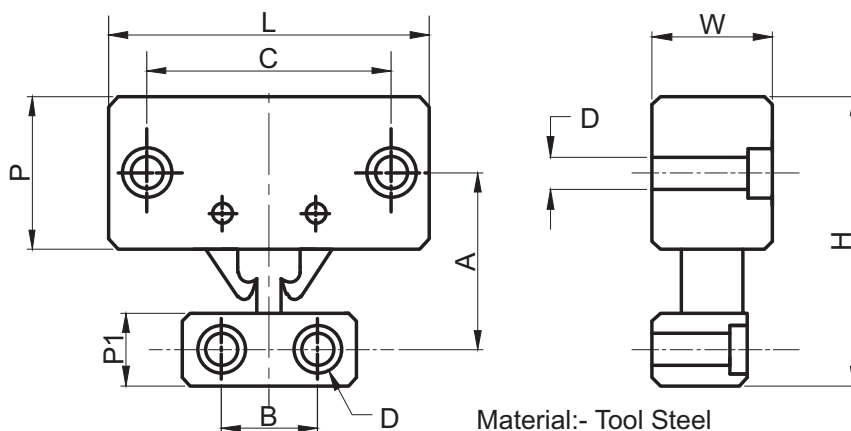


Material:- Tool Steel

| Code | D | H | d | A |
|----------|----|----|------|-----|
| PPEA-B01 | 6 | 12 | 4.2 | 4.5 |
| PPEA-B02 | 8 | 15 | 4.5 | 6 |
| PPEA-B03 | 10 | 20 | 7 | 7.5 |
| PPEA-B04 | 12 | 25 | 7.7 | 9 |
| PPEA-B05 | 16 | 30 | 10.3 | 12 |
| PPEA-B06 | 18 | 35 | 12 | 14 |
| PPEA-B07 | 20 | 35 | 12.9 | 15 |
| PPEA-B08 | 25 | 45 | 14.9 | 20 |
| PPEA-B09 | 30 | 45 | 18 | 25 |

Order Type:- Code
Example:- PPEA-B04

► Mould Latch (PPLC-A)



Material:- Tool Steel

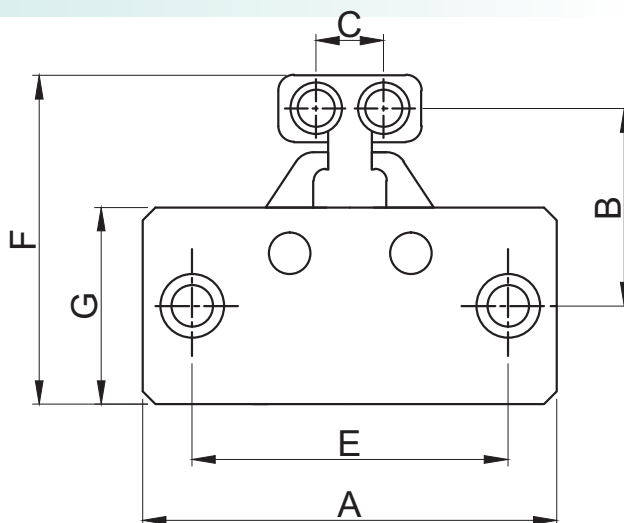
| Code | Type | A | B | C | D | L | W | H | P | P1 | Force(kg) |
|----------|-------------|------|----|----|-----|-----|----|-----|----|----|-----------|
| PPLC-A01 | Light Duty | 27.5 | 16 | 42 | M6 | 55 | 22 | 44 | 25 | 13 | 45 |
| PPLC-A02 | Medium Duty | 40 | 20 | 61 | M8 | 80 | 28 | 70 | 38 | 18 | 110 |
| PPLC-A03 | Heavy Duty | 60 | 30 | 95 | M12 | 120 | 48 | 106 | 57 | 27 | 225 |

Order Type:- Code
Example:- PPLC-A02

► Mould Latch (PPLC-B)



Material:- Casting CI-FG260



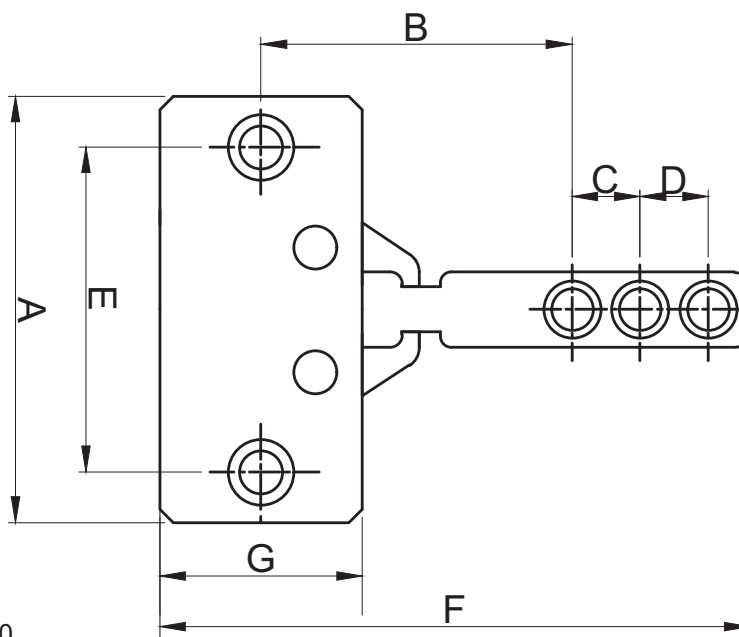
| Code | Type | A | B | C | E | F | G | force(kg) | screw hole |
|----------|-------------|----|----|----|----|----|----|-----------|------------|
| PPLC-B01 | Medium Duty | 78 | 40 | 15 | 60 | 68 | 38 | 500 | M8 |
| PPLC-B02 | Heavy Duty | 91 | 58 | 17 | 72 | 93 | 51 | 900 | M10 |

Order Type:- Code
Example:- PPLC-B01

► Mould Latch (PPLC-C)



Material:- Body Casting CI-FG260



| Code | Type | A | B | C | D | E | F | G | force(kg) | screw hole |
|----------|-------------|----|----|----|----|----|-----|----|-----------|------------|
| PPLC-C01 | Medium Duty | 78 | 58 | 15 | 15 | 60 | 116 | 38 | 500 | M8 |
| PPLC-C02 | Heavy Duty | 91 | 73 | 17 | 17 | 72 | 142 | 51 | 900 | M10 |

Order Type:- Code
Example:- PPLC-C01